

20. Habitats Regulations Assessment (HRA)

Without exception, all development plans and policies within the vicinity of, or encompassing Natura 2000 sites (Special Protection Areas and Special Areas of Conservation) and Ramsar Sites legally require a formal HRA to protect the integrity of these sites. Penny Anderson Associates Ltd. (PAA) carries out such works routinely, in a systematic and thorough manner, to ensure all elements of this process are completed as requested and to the standards required by law.

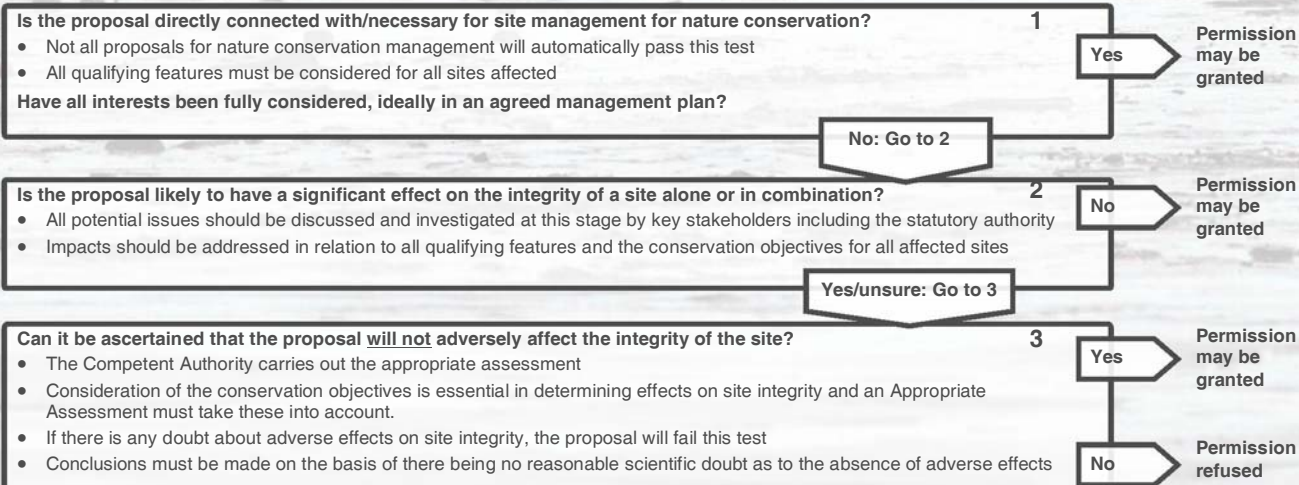
HRA systematically assesses all likely impacts of any given development plan or policy on the integrity of Natura 2000 and Ramsar sites, including possible effects 'in combination' with other plans, projects and programmes. In the first instance, this involves a Stage 1 Screening Assessment (in consultation with statutory agencies and key stakeholders) to identify all relevant sites, including details of their qualifying features and conservation objectives, and the range of potentially negative impacts on their integrity.

In all cases, where it cannot be concluded that a given plan or proposal will not result in significant impacts on the integrity of a site, a Stage 2 Appropriate Assessment will be requested by the competent authority. At this stage, if there is any doubt concerning adverse impacts on site integrity, permission will be refused.



The HRA Process

Will the development plan/policy affect the integrity of a Natura 2000 or Ramsar site?



Our Expertise

PAA has carried out a diverse range of HRA Screening and Appropriate Assessment work, including:

A wide range of protected sites:

- Belfast Lough SPA/Ramsar Site
- Cannock Extension Canal SAC
- Humber Estuary SPA/SAC/Ramsar Site
- Ribble and Alt Estuaries SPA/SAC
- Martin Mere SPA/SAC
- North Wirral Foreshore SAC
- South Pennines SPA/SAC

Diverse plans and policies including:

- Airport expansion plans, including masterplan optioneering and runway lengthening
- Local Development Plans and Policies
- Renewable energy plant development
- Sports pitches and recreational facilities
- Flying club expansion
- Urban regeneration/development plans
- Reservoir dewatering
- Quarrying

A wide range of qualifying features such as:

- Waterbirds
- Freshwater crayfish
- Floating water-plantain

Various key issues such as:

- Air, water, light and noise pollution
- Operational and construction-based disturbance
- Temporal and spatial population dynamics
- Population viability, connectivity and habitat functionality
- Habitat loss/degradation
- Barriers to movement
- Water abstraction and discharge

For more information, please contact us: enquiries@pennyanderson.com

Related Brochure Inserts

Information is available summarising our expertise in the following related areas; please contact us if you require copies of any of these numbered brochure inserts:

2. Animals: protected and priority species and development. **6.** Birds and development. **8.** Ecological survey and evaluation. **9.** Ecological survey calendar
12. Environmental impact assessment. **14.** Expert witness and public enquiry support. **24.** Literature and data reviews. **27.** Strategic planning for wildlife and people.
28. Sustainability: BREEAM and CSH. **29.** Vegetation survey and assessment. **31.** Wetlands: sustainable urban drainage systems **32.** Wind farms: environmental services. **33.** Working in Wales: environmental services

